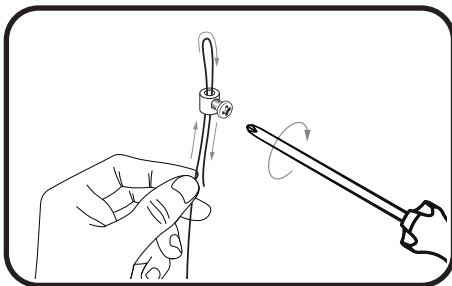
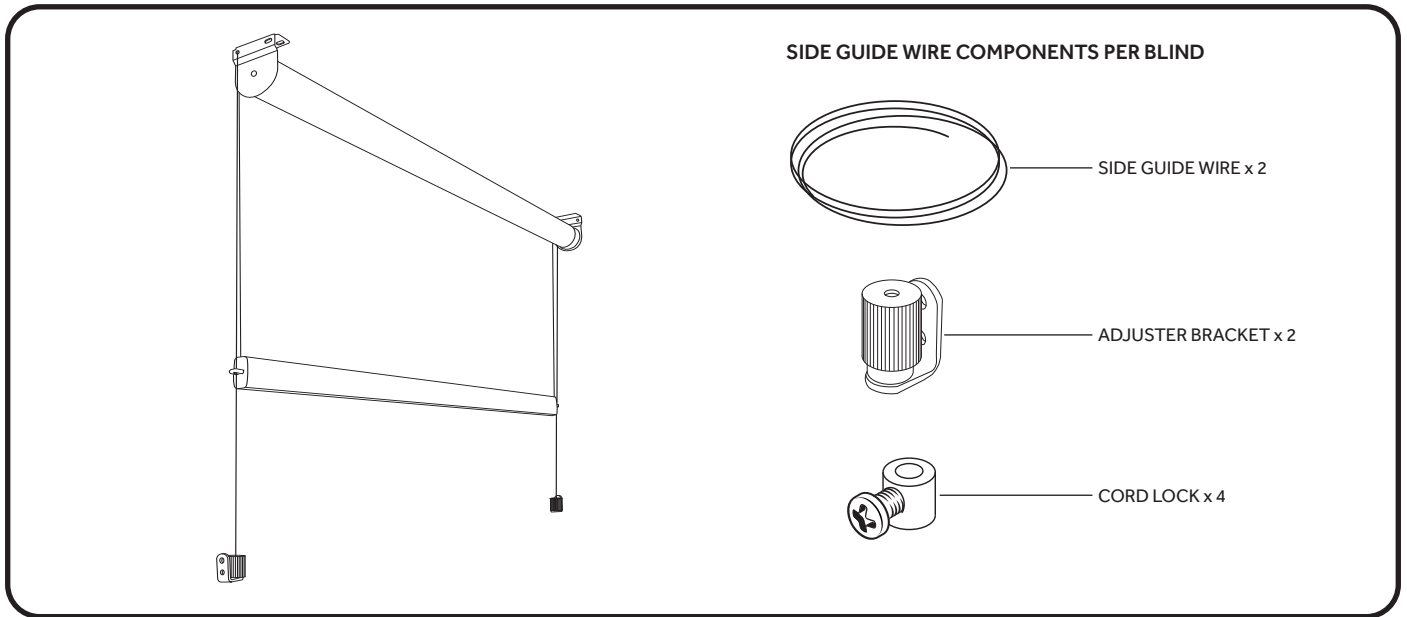
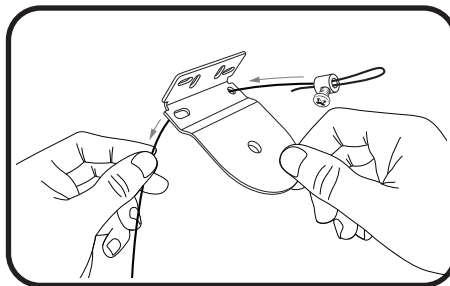


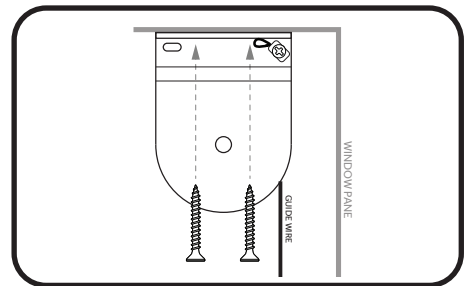
ROLLER BLIND SIDE GUIDE WIRE FITTING INSTRUCTIONS



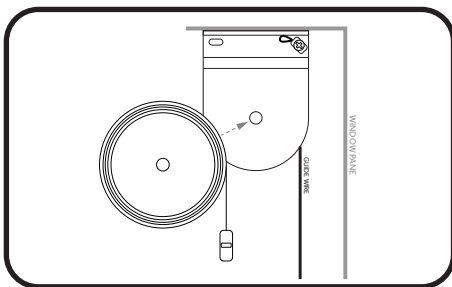
1. Thread the wire through the cord lock and back to create a loop and tighten the screw. Repeat this step for the other wire.



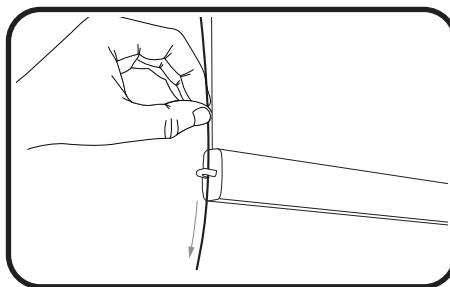
2. Thread the bottom of the wire through the roller bracket and pull it fully down. Repeat this process for the other wire.



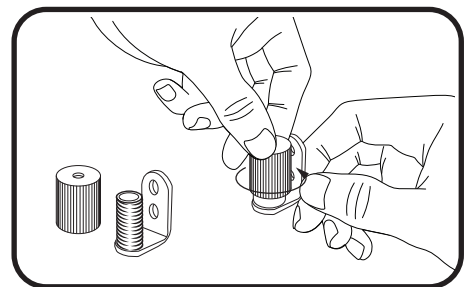
3. Fit both roller brackets in desired place.



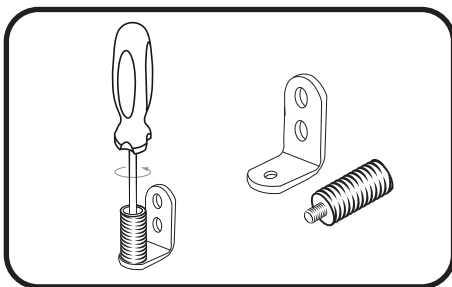
4. Lock your roller blind into previously fitted brackets.



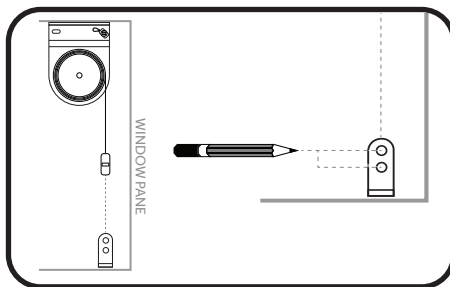
5. Thread the wire down through the loop in the bottom bar end cap. Repeat this step for the wire on the other side of the boom bar.



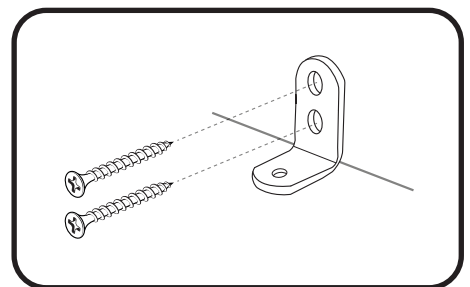
6. Unscrew the adjuster cap on both adjuster brackets.



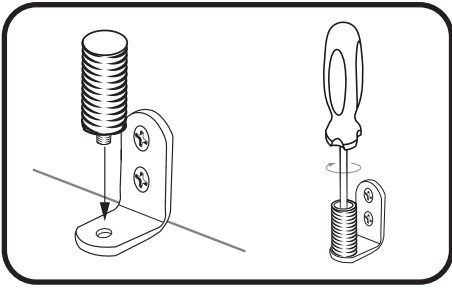
7. Unscrew the adjuster cap thread on both adjuster brackets to allow for fixing onto the wall.



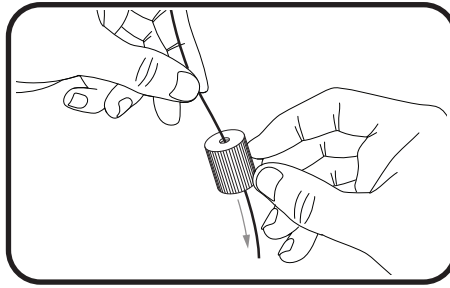
8. Align the adjuster bracket with the bottom bar and mark the wall for fixing.



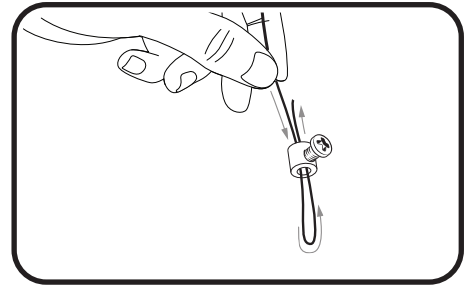
9. Fix both adjuster brackets onto the wall.



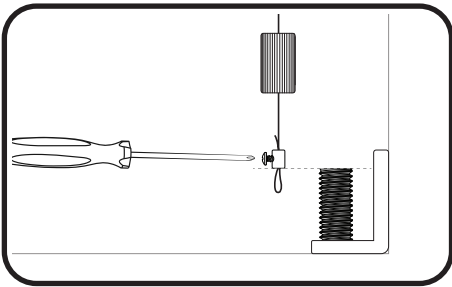
10. Screw the adjuster cap thread back onto both adjuster brackets.



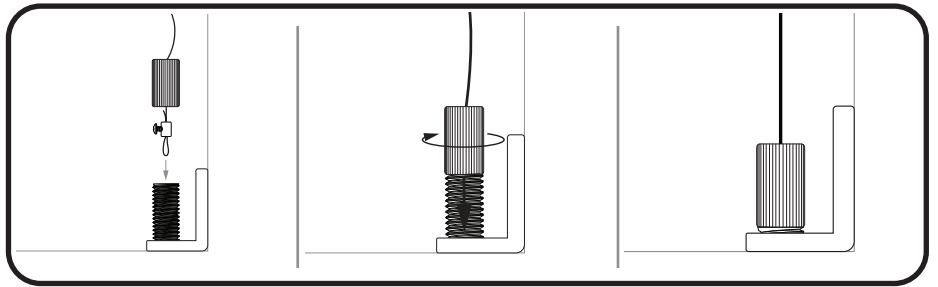
11. Thread the bottom of the wire down through the adjuster cap. Repeat this step for the other wire.



12. Thread the wire down through the cord lock and back up to create a loop. Repeat this step for the other wire.



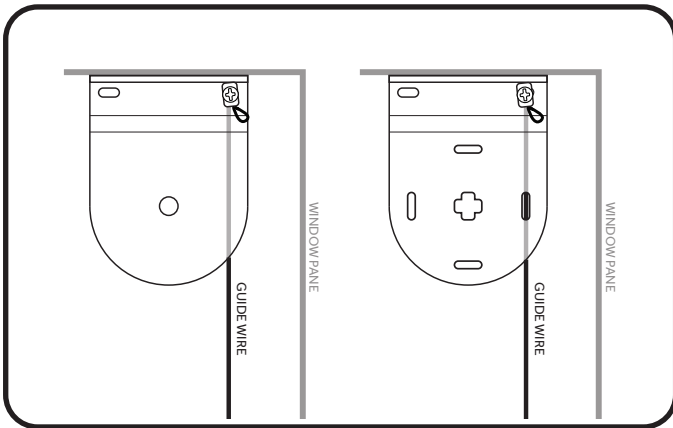
13. Pull the wire tight and adjust the position of the cord lock so the bottom edge of it is level with the top edge of the thread on the adjuster bracket and tighten the cord lock screw. Repeat this step for the other wire.



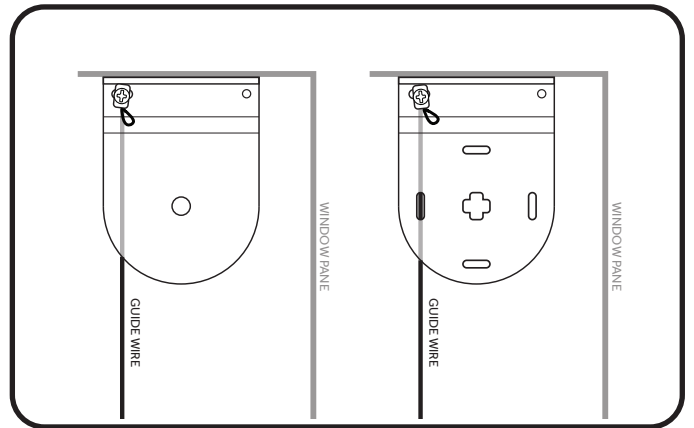
14. Tighten the the adjuster cap on the adjuster bracket for desired side guide wire tension. Repeat this step for the other wire.

ROLLER BRACKET SIDE GUIDE WIRE PLACEMENT FOR DIFFRENT FITTING OPTIONS

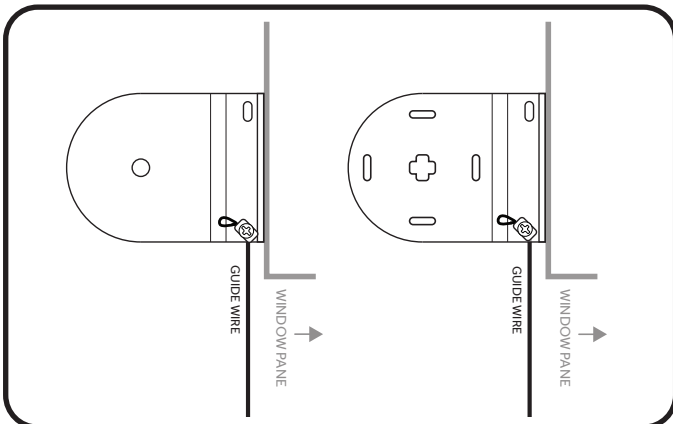
TOP FIX - STANDARD ROLLER BLIND



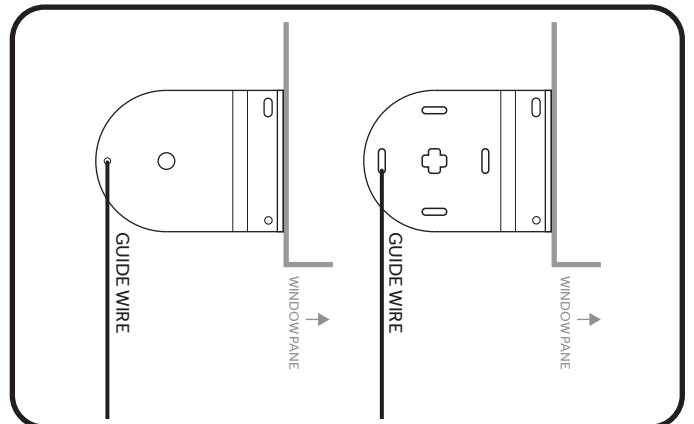
TOP FIX - REVERSED ROLLER BLIND



FACE FIX - STANDARD ROLLER BLIND



FACE FIX - REVERSED ROLLER BLIND



*Drill a hole in the idle end roller bracket (shown above) to attach the wire aligned with the bottom bar.